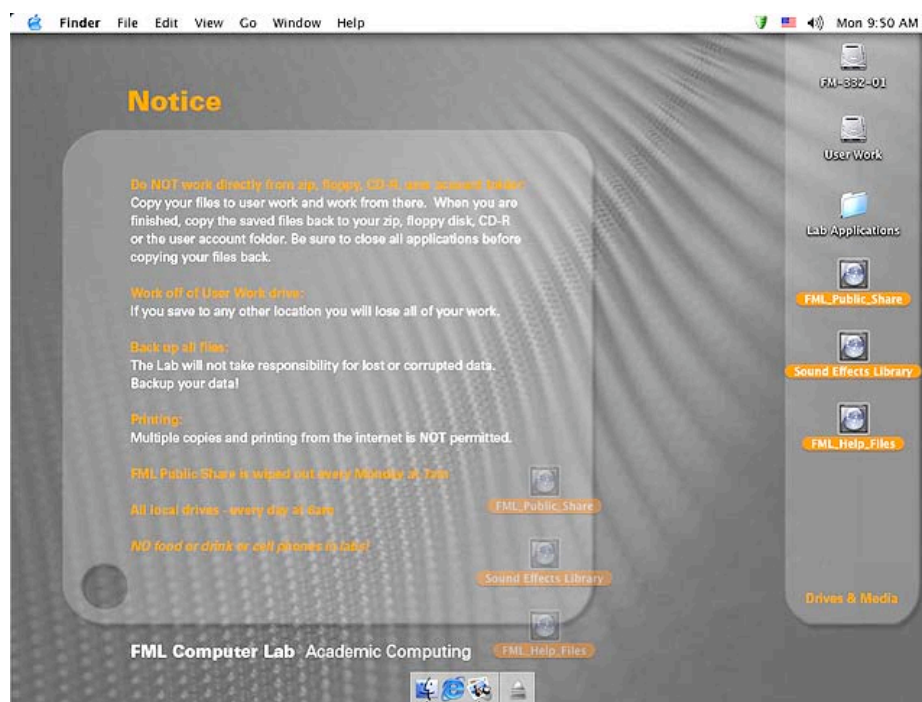


how to turn in homework on the server

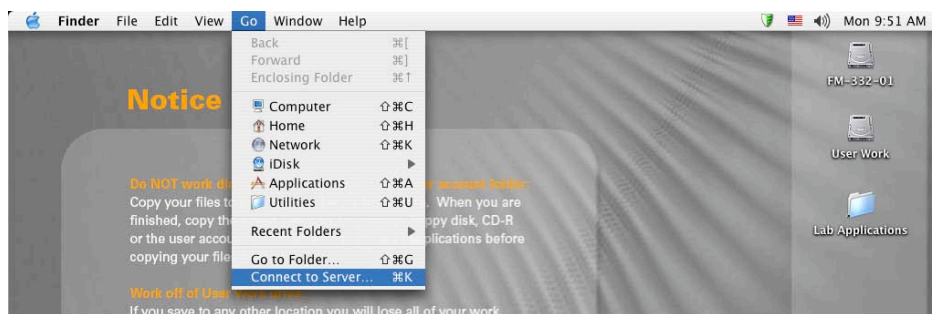
All computers in the Foundation Media Labs (FML) have hard drives which are erased daily. All computers are on a network connected to the FML server.

Use your Firewire drive to work on and store/save your files. To turn in completed assignments, connect to your class folder in the **escott** folder on the FML server.

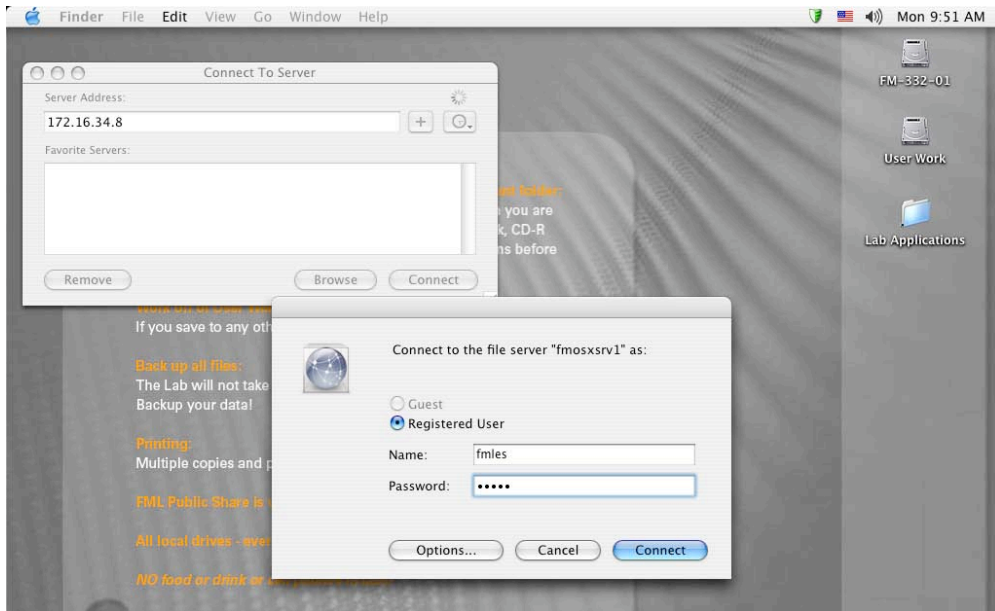
1. **Log in** (fmlmac, no password)
2. **Delete Existing Connections:** Click & drag to select all server connections on the desktop and drag them to the Trash/Eject icon.



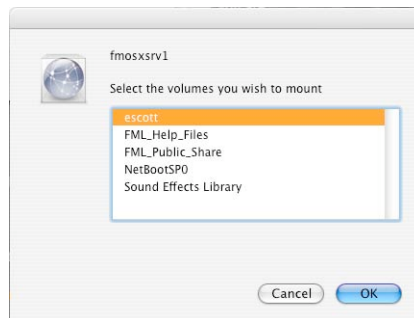
3. **Connect to escott:** Click **Go** → **Connect to Server...**



...click **Connect** on the first pop-up window. In the second window, log in with **fmles** as both name and password; click **Connect**.



4. Choose **escott** from the list (shift+click to select and open multiple server connections).



5. Double-click the **escott** icon to access and copy files in your class folder.

